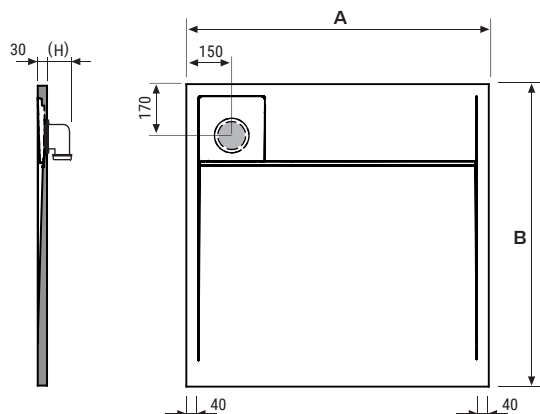
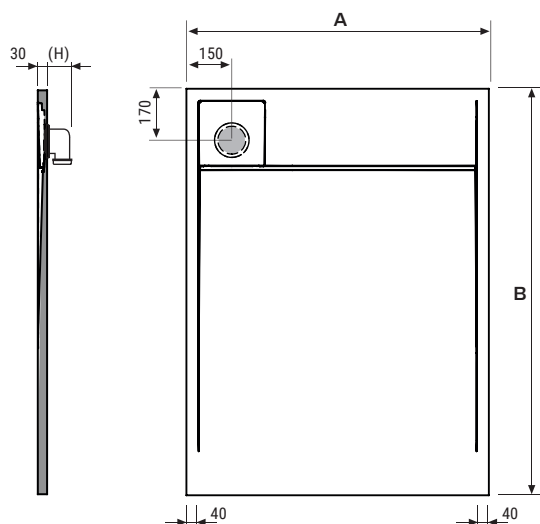
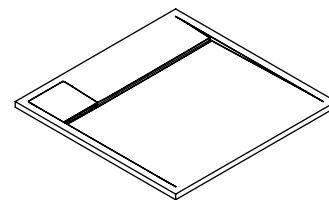


## Pre-installation

### Shower tray ICONIK

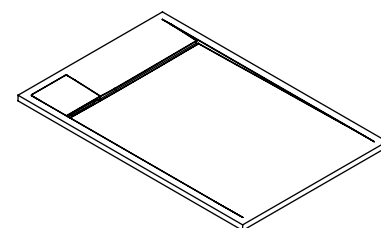


A	B	V	P
900	900	0'047	42
1000	1000	0'052	51



A	B	V	P
800	1100	0'046	45
800	1200	0'050	50
800	1300	0'054	53
800	1400	0'058	58
900	1100	0'052	51
900	1200	0'056	56
900	1300	0'061	60
900	1400	0'065	65

Units: mm / V: m<sup>3</sup> / P: Kg

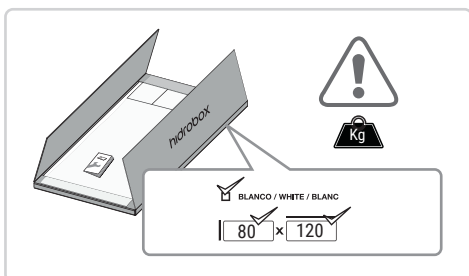


(H) Height according to valve supplied

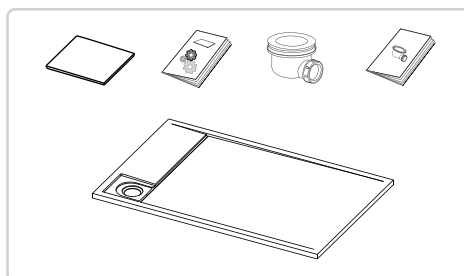
X Glass enclosure zone. The minimum area reserved for the glass enclosure is 30mm

## Installation

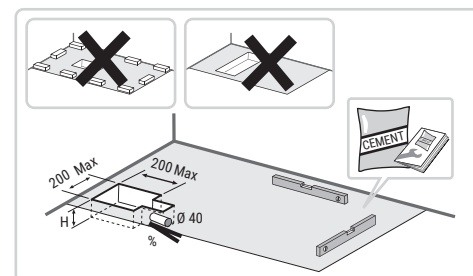
1



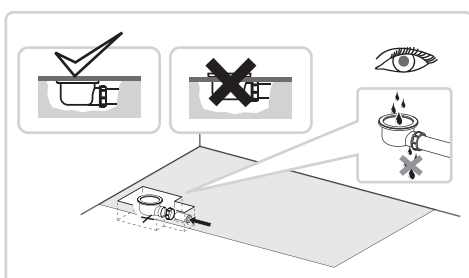
2



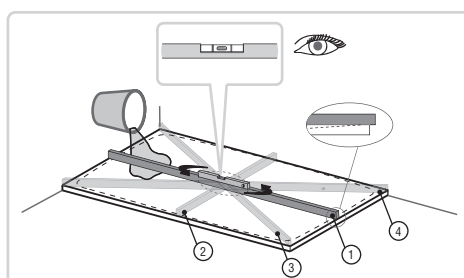
3



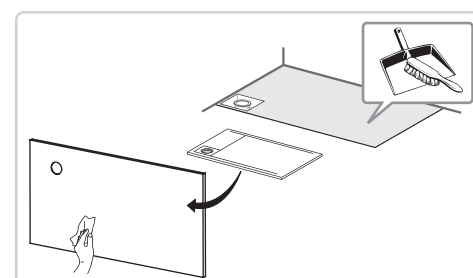
4



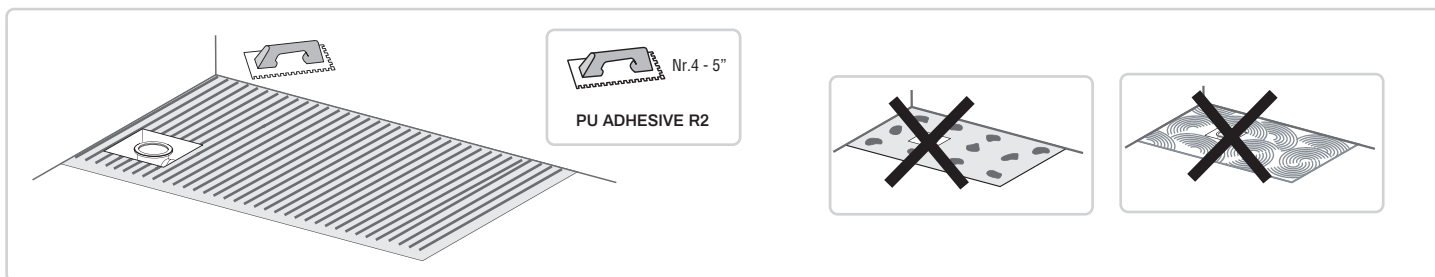
5



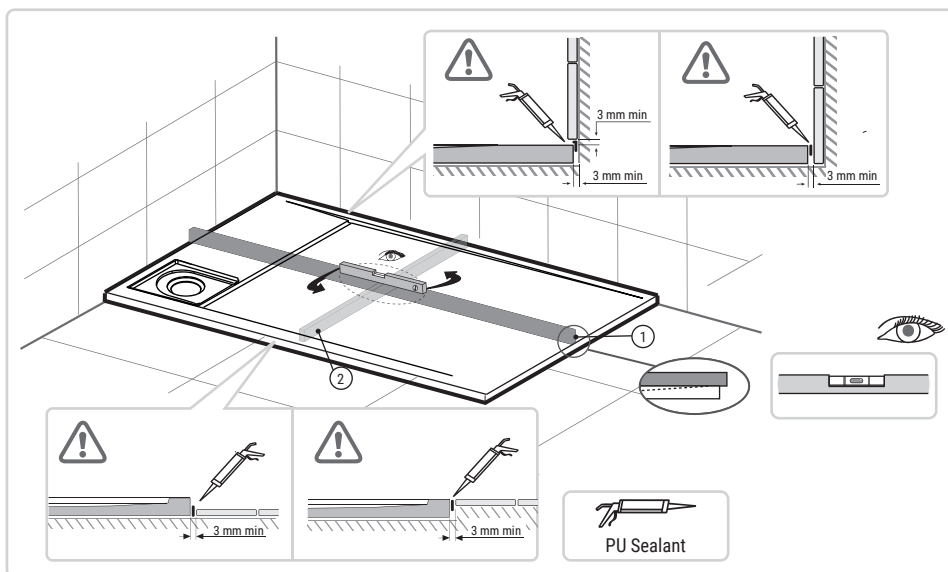
6



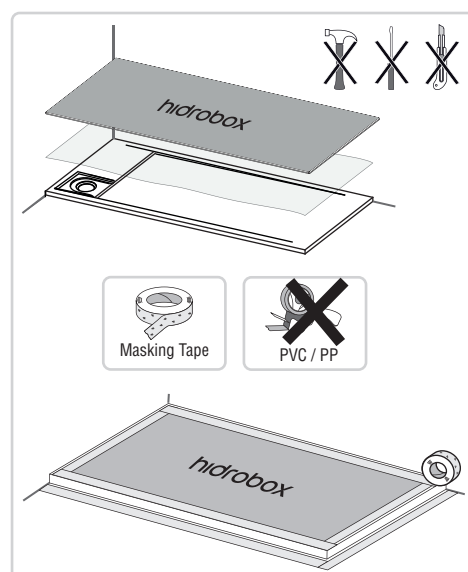
7



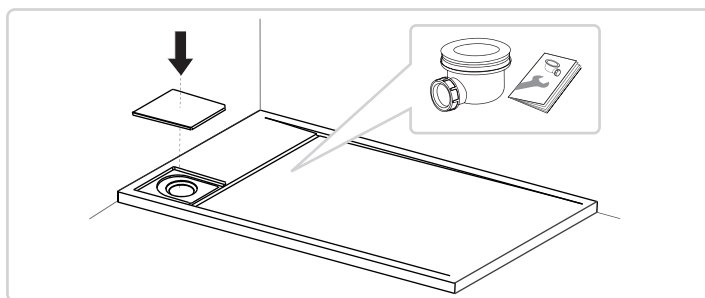
8



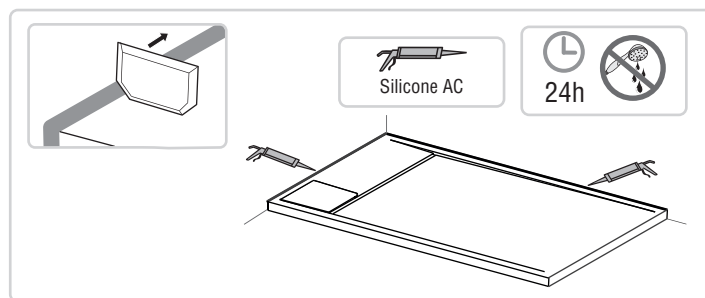
9



10



11



## Adhesives and others (supplied by hidrobox)



**Two-component polyurethane adhesive R2 or R2T**  
Cube of 5KG or 10KG White



**Silicone sealant**  
310 ml cartridge