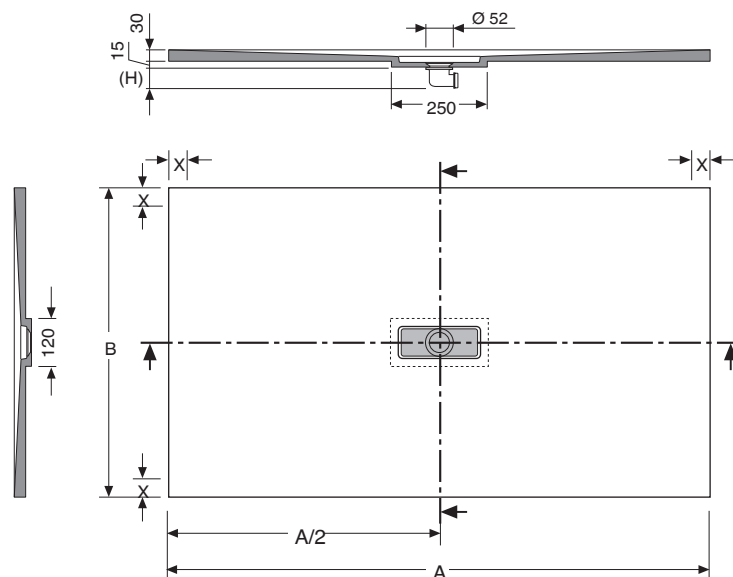


## Preinstalación

## Plato de ducha ARQ



| A           | B   | V     | P  |
|-------------|-----|-------|----|
| 1000        | 700 | 0,063 | 38 |
| 1010 → 1100 | 700 | 0,071 | 42 |
| 1110 → 1200 | 700 | 0,075 | 46 |
| 1210 → 1300 | 700 | 0,083 | 50 |
| 1310 → 1400 | 700 | 0,087 | 54 |
| 1410 → 1500 | 700 | 0,094 | 57 |
| 1510 → 1600 | 700 | 0,102 | 62 |
| 1610 → 1700 | 700 | 0,106 | 65 |
| 1710 → 1800 | 700 | 0,114 | 69 |
| 1810 → 1900 | 700 | 0,118 | 72 |
| 1910 → 2000 | 700 | 0,139 | 78 |

| A           | B   | V     | P  |
|-------------|-----|-------|----|
| 1000        | 750 | 0,063 | 40 |
| 1010 → 1100 | 750 | 0,071 | 45 |
| 1110 → 1200 | 750 | 0,075 | 50 |
| 1210 → 1300 | 750 | 0,083 | 53 |
| 1310 → 1400 | 750 | 0,087 | 58 |
| 1410 → 1500 | 750 | 0,094 | 61 |
| 1510 → 1600 | 750 | 0,102 | 66 |
| 1610 → 1700 | 750 | 0,106 | 70 |
| 1710 → 1800 | 750 | 0,114 | 75 |
| 1810 → 1900 | 750 | 0,118 | 78 |
| 1910 → 2000 | 750 | 0,139 | 84 |

| A           | B   | V     | P  |
|-------------|-----|-------|----|
| 1000        | 800 | 0,063 | 43 |
| 1010 → 1100 | 800 | 0,071 | 48 |
| 1110 → 1200 | 800 | 0,075 | 53 |
| 1210 → 1300 | 800 | 0,083 | 57 |
| 1310 → 1400 | 800 | 0,087 | 62 |
| 1410 → 1500 | 800 | 0,094 | 66 |
| 1510 → 1600 | 800 | 0,102 | 71 |
| 1610 → 1700 | 800 | 0,106 | 75 |
| 1710 → 1800 | 800 | 0,114 | 80 |
| 1810 → 1900 | 800 | 0,118 | 83 |
| 1910 → 2000 | 800 | 0,139 | 89 |

| A           | B   | V     | P  |
|-------------|-----|-------|----|
| 1000        | 900 | 0,079 | 49 |
| 1010 → 1100 | 900 | 0,089 | 55 |
| 1110 → 1200 | 900 | 0,094 | 60 |
| 1210 → 1300 | 900 | 0,104 | 65 |
| 1310 → 1400 | 900 | 0,109 | 70 |
| 1410 → 1500 | 900 | 0,119 | 74 |
| 1510 → 1600 | 900 | 0,124 | 80 |
| 1610 → 1700 | 900 | 0,134 | 84 |
| 1710 → 1800 | 900 | 0,139 | 90 |
| 1810 → 1900 | 900 | 0,139 | 94 |
| 1910 → 2000 | 900 | 0,139 | 99 |

| A           | B    | V     | P   |
|-------------|------|-------|-----|
| 1000        | 1000 | 0,079 | 53  |
| 1010 → 1100 | 1000 | 0,089 | 60  |
| 1110 → 1200 | 1000 | 0,094 | 66  |
| 1210 → 1300 | 1000 | 0,104 | 71  |
| 1310 → 1400 | 1000 | 0,109 | 77  |
| 1410 → 1500 | 1000 | 0,119 | 81  |
| 1510 → 1600 | 1000 | 0,124 | 87  |
| 1610 → 1700 | 1000 | 0,134 | 92  |
| 1710 → 1800 | 1000 | 0,139 | 98  |
| 1810 → 1900 | 1000 | 0,139 | 103 |
| 1910 → 2000 | 1000 | 0,139 | 108 |

| A           | B    | V     | P   |
|-------------|------|-------|-----|
| 1000        | 1100 | 0,079 | 62  |
| 1010 → 1100 | 1100 | 0,089 | 69  |
| 1110 → 1200 | 1100 | 0,094 | 75  |
| 1210 → 1300 | 1100 | 0,104 | 80  |
| 1310 → 1400 | 1100 | 0,109 | 86  |
| 1410 → 1500 | 1100 | 0,119 | 90  |
| 1510 → 1600 | 1100 | 0,124 | 96  |
| 1610 → 1700 | 1100 | 0,134 | 101 |
| 1710 → 1800 | 1100 | 0,139 | 107 |
| 1810 → 1900 | 1100 | 0,139 | 111 |
| 1910 → 2000 | 1100 | 0,139 | 118 |

| A           | B    | V     | P   |
|-------------|------|-------|-----|
| 1300        | 1300 | 0,148 | 116 |
| 1310 → 1400 | 1300 | 0,159 | 126 |
| 1410 → 1500 | 1300 | 0,170 | 137 |
| 1510 → 1600 | 1300 | 0,181 | 147 |
| 1610 → 1700 | 1300 | 0,191 | 153 |
| 1710 → 1800 | 1300 | 0,202 | 164 |
| 1810 → 1900 | 1300 | 0,213 | 174 |

| A           | B    | V     | P   |
|-------------|------|-------|-----|
| 1300        | 1400 | 0,159 | 127 |
| 1310 → 1400 | 1400 | 0,174 | 138 |
| 1410 → 1500 | 1400 | 0,182 | 148 |
| 1510 → 1600 | 1400 | 0,194 | 160 |
| 1610 → 1700 | 1400 | 0,206 | 167 |
| 1710 → 1800 | 1400 | 0,217 | 178 |
| 1810 → 1900 | 1400 | 0,229 | 189 |

Units: mm / V: m<sup>3</sup> / P: Kg

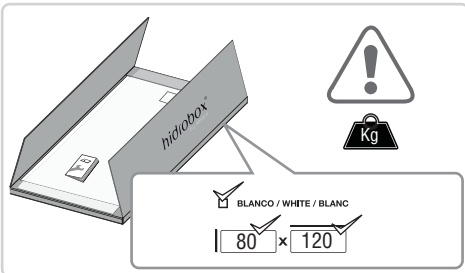
(H) Medida en función del desagüe suministrado.

X Zona emplazamiento mampara. El espacio mínimo reservado para la mampara es de 30mm.

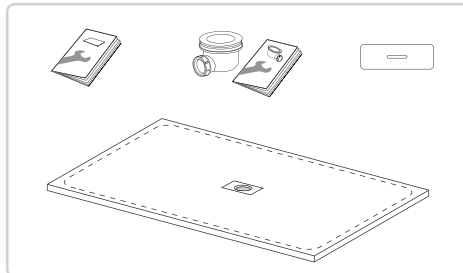
## Instalación

### Plato de ducha ARQ

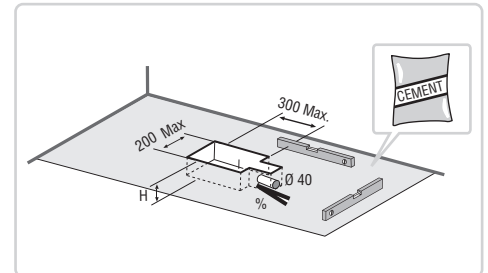
1



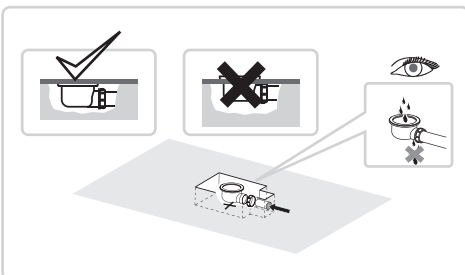
2



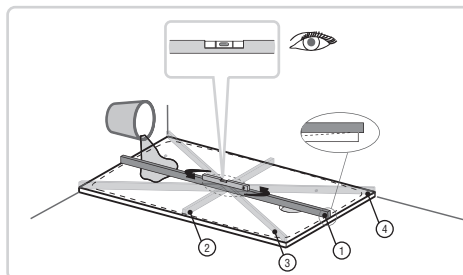
3



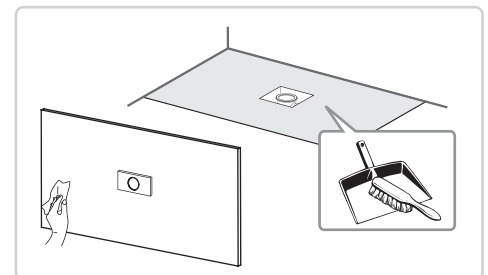
4



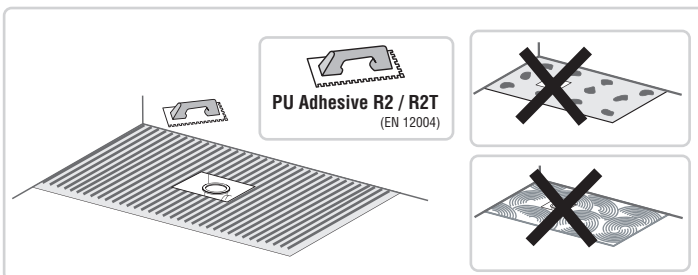
5



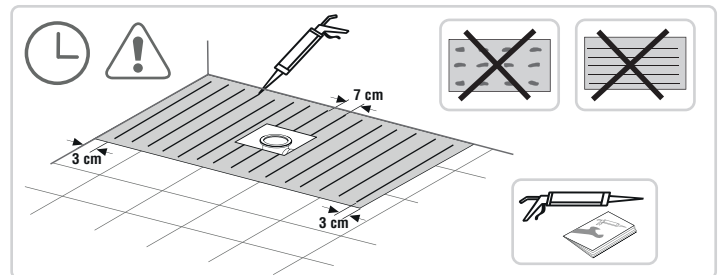
6



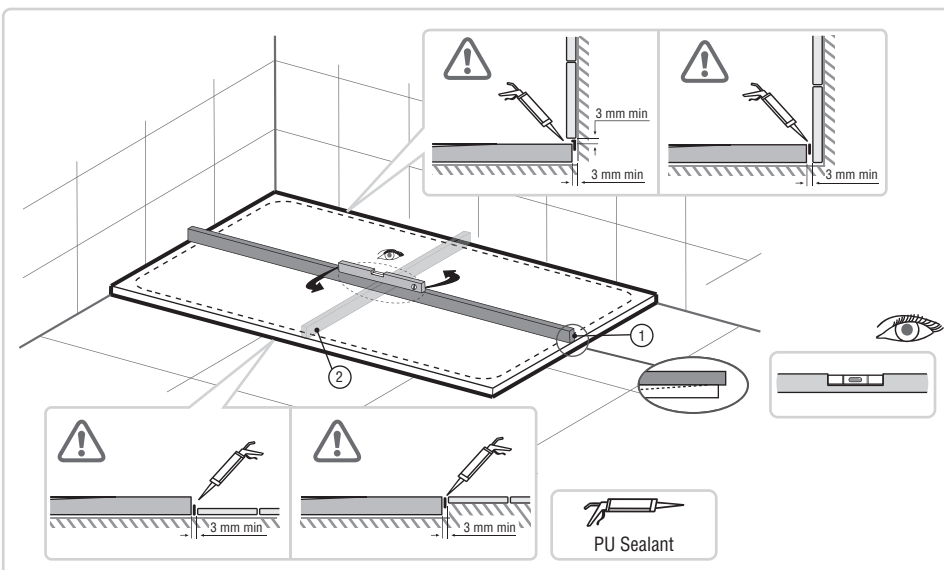
#### 7.1 OPTION (A)



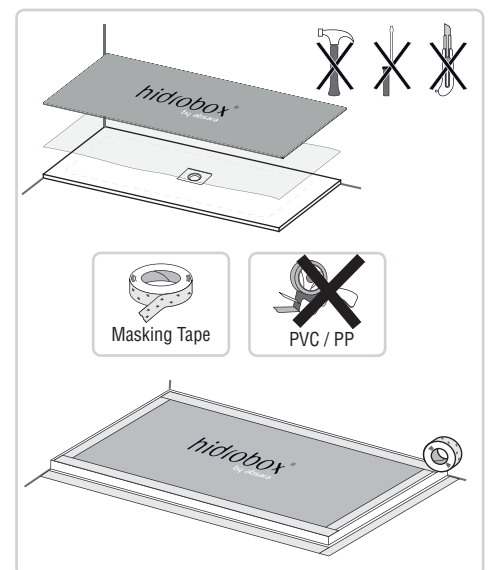
#### 7.2 OPTION (B)



8



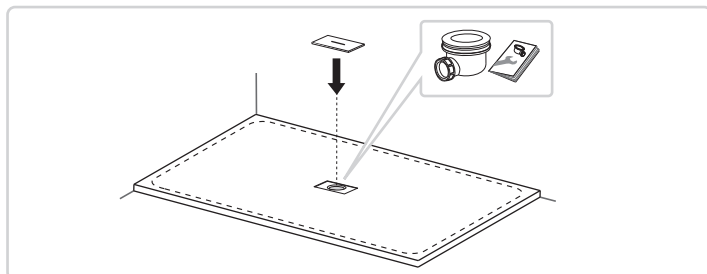
9



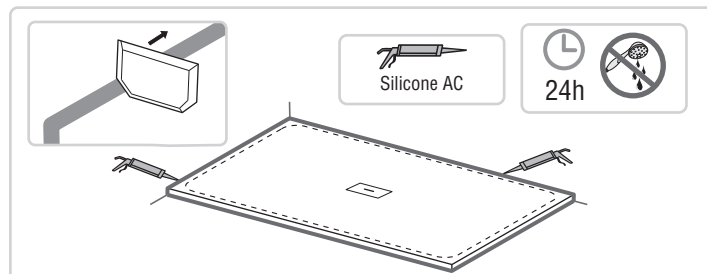
## Instalación

## Plato de ducha ARQ

10



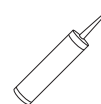
11


**Adhesivos y otros**  
 (suministrados por Hidrobox)


**Adhesivo bicomponente  
R2PU para lana dentada**  
Bote de 5KG o 10KG Blanco



**Adhesivo PU por cordones**  
Cartucho de 300 ml



**Sellador de silicona monocomponente**  
Cartucho de 310 ml