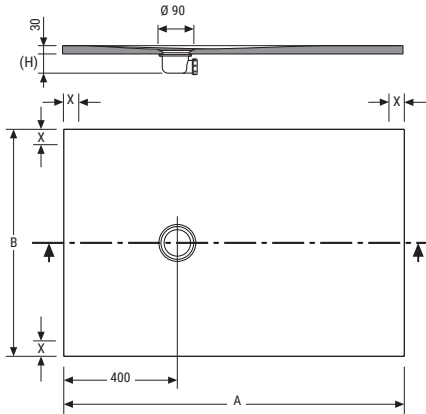
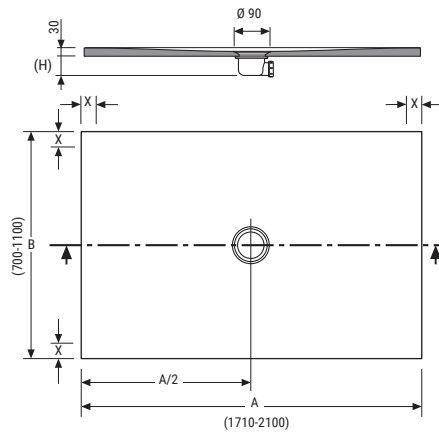


## Preinstalación

### Plato de ducha NEO PLUS



A	B	V	P	A	B	V	P		
800	800	0,038	32	800	900	0,042	36		
810	→ 900	800	0,042	37	810	→ 900	900	0,047	42
910	→ 1000	800	0,042	42	910	→ 1000	900	0,047	47
1010	→ 1100	800	0,046	45	1010	→ 1100	900	0,052	51
1110	→ 1200	800	0,050	51	1110	→ 1200	900	0,056	56
1210	→ 1300	800	0,054	54	1210	→ 1300	900	0,061	60
1310	→ 1400	800	0,058	58	1310	→ 1400	900	0,065	65
1410	→ 1500	800	0,062	61	1410	→ 1500	900	0,070	68
1510	→ 1600	800	0,066	66	1510	→ 1600	900	0,075	74
1610	→ 1700	800	0,071	70	1610	→ 1700	900	0,079	84
1710	→ 1800	800	0,088	76	1710	→ 1800	900	0,088	85
1810	→ 1900	800	0,088	81	1810	→ 1900	900	0,088	90
1910	→ 2000	800	0,098	84	1910	→ 2000	900	0,098	94
2010	→ 2100	800	0,098	89	2010	→ 2100	900	0,098	99

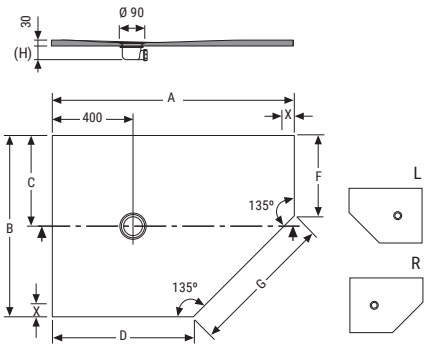


A	B	V	P	A	B	V	P		
1000	→ 1100	1000	0,057	55	1000	→ 1100	1100	0,063	62
1110	→ 1200	1000	0,062	61	1110	→ 1200	1100	0,068	68
1210	→ 1300	1000	0,067	65	1210	→ 1300	1100	0,074	73
1310	→ 1400	1000	0,072	71	1310	→ 1400	1100	0,080	80
1410	→ 1500	1000	0,078	74	1410	→ 1500	1100	0,085	83
1510	→ 1600	1000	0,083	80	1510	→ 1600	1100	0,091	89
1610	→ 1700	1000	0,088	86	1610	→ 1700	1100	0,096	96
1710	→ 1800	1000	0,102	92	1710	→ 1800	1100	0,102	102
1810	→ 1900	1000	0,108	98	1810	→ 1900	1100	0,108	109
1910	→ 2000	1000	0,113	102	1910	→ 2000	1100	0,113	114
2010	→ 2100	1000	0,119	108	2010	→ 2100	1100	0,119	120

A	B	V	P	A	B	V	P		
800	700	0,038	28	800	750	0,038	30		
810	→ 900	700	0,042	32	810	→ 900	750	0,042	34
910	→ 1000	700	0,042	36	910	→ 1000	750	0,042	39
1010	→ 1100	700	0,046	39	1010	→ 1100	750	0,046	42
1110	→ 1200	700	0,050	43	1110	→ 1200	750	0,050	46
1210	→ 1300	700	0,054	46	1210	→ 1300	750	0,054	50
1310	→ 1400	700	0,058	50	1310	→ 1400	750	0,058	54
1410	→ 1500	700	0,062	52	1410	→ 1500	750	0,062	57
1510	→ 1600	700	0,066	56	1510	→ 1600	750	0,066	61
1610	→ 1700	700	0,071	61	1610	→ 1700	750	0,071	65
1710	→ 1800	700	0,088	66	1710	→ 1800	750	0,088	71
1810	→ 1900	700	0,088	70	1810	→ 1900	750	0,088	75
1910	→ 2000	700	0,098	73	1910	→ 2000	750	0,098	79
2010	→ 2100	700	0,098	77	2010	→ 2100	750	0,098	83

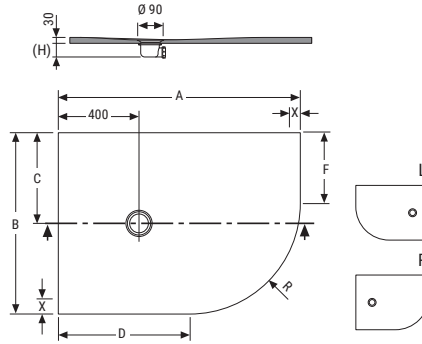
A	B	V	P	A	B	V	P		
1200	→ 1300	1200	0,102	81	1200	→ 1300	1300	0,109	103
1310	→ 1400	1200	0,109	88	1310	→ 1400	1300	0,117	113
1410	→ 1500	1200	0,116	94	1410	→ 1500	1300	0,125	120
1510	→ 1600	1200	0,123	101	1510	→ 1600	1300	0,133	130
1610	→ 1700	1200	0,131	106	1610	→ 1700	1300	0,140	136
1710	→ 1800	1200	0,138	114	1710	→ 1800	1300	0,148	145
1200	→ 1300	1400	0,117	96	1310	→ 1400	1400	0,125	105

Units: mm / V: m³ / P: Kg



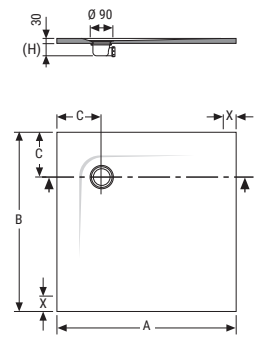
A	B	C	D	G	F	V	P
1200	800	400	700	710	300	0,050	43
1200	900	450	700	710	400	0,056	50

Units: mm / V: m³ / P: Kg



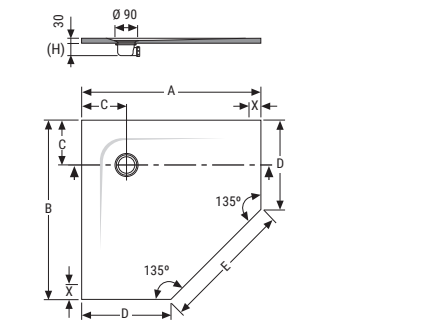
A	B	C	D	F	R	V	P
1200	800	400	650	250	550	0,050	46
1200	900	450	650	350	550	0,056	53

Units: mm / V: m³ / P: Kg



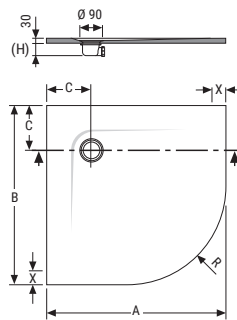
A	B	C	V	P
800	800	150	0,038	31
900	900	200	0,047	41
1000	1000	250	0,052	53

Units: mm / V: m³ / P: Kg



A	B	C	D	E	V	P
900	900	170	400	710	0,047	34
1000	1000	250	500	710	0,052	45

Units: mm / V: m³ / P: Kg



A	B	C	R	V	P
800	800	150	550	0,038	28
900	900	200	550	0,047	38
1000	1000	250	550	0,052	49

Units: mm / V: m³ / P: Kg

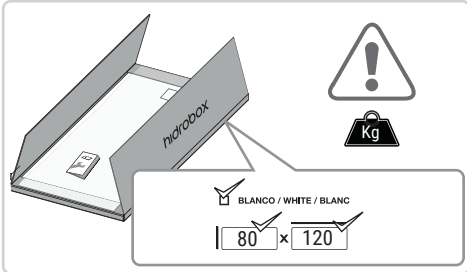
(H) Medida en función del desagüe suministrado.

X Zona emplazamiento mampara.  
El espacio mínimo reservado para la mampara es de 30mm.

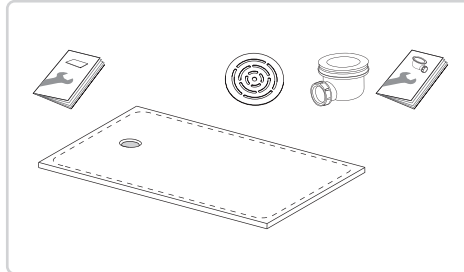
## Instalación

### Plato de ducha NEO PLUS

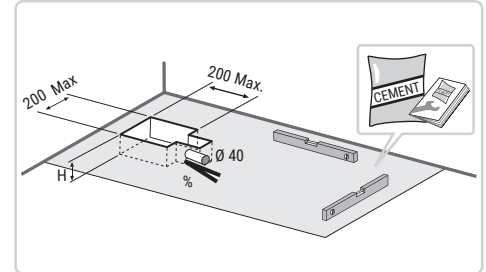
1



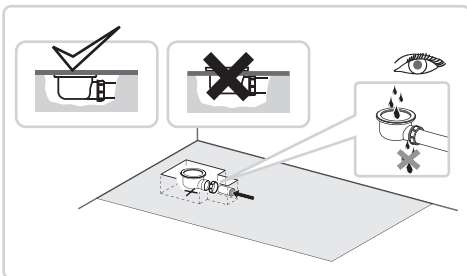
2



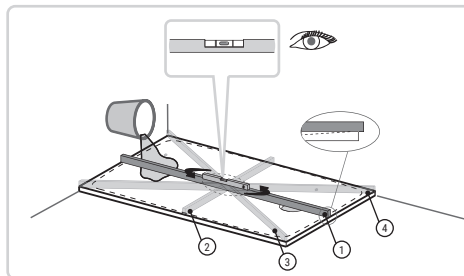
3



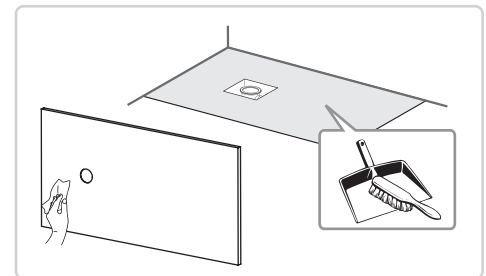
4



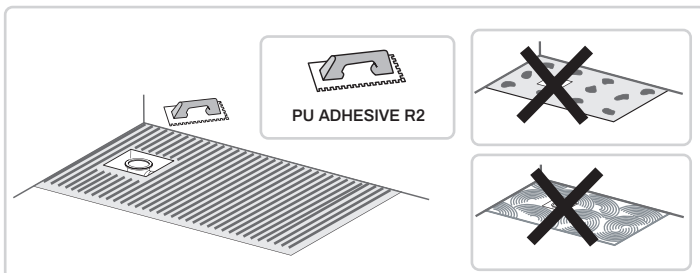
5



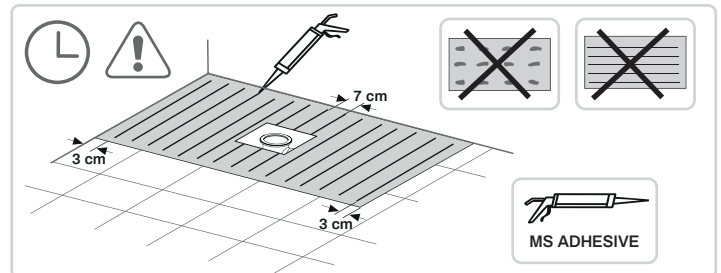
6



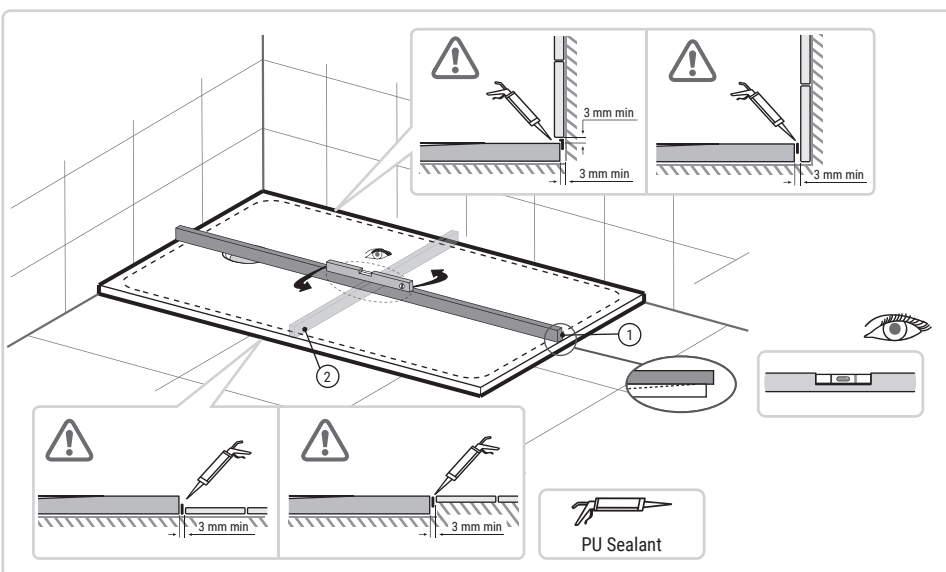
#### 7.1 OPTION (A)



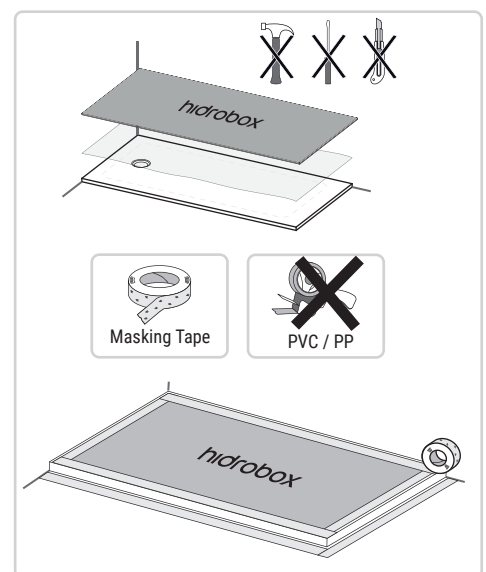
#### 7.2 OPTION (B)



8



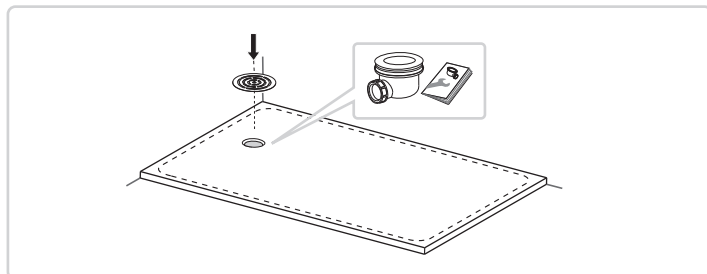
9



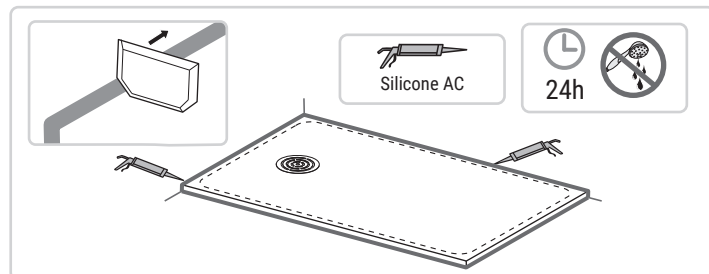
## Instalación

### Plato de ducha NEO PLUS

10



11



### Adhesivos y otros (suministrados por Hidrobox)



**Adhesivo bicomponente  
R2PU para lana dentada**  
Bote de 5KG o 10KG Blanco



**Adhesivo PU por cordones**  
Cartucho de 300 ml



**Sellador de silicona monocomponente**  
Cartucho de 310 ml