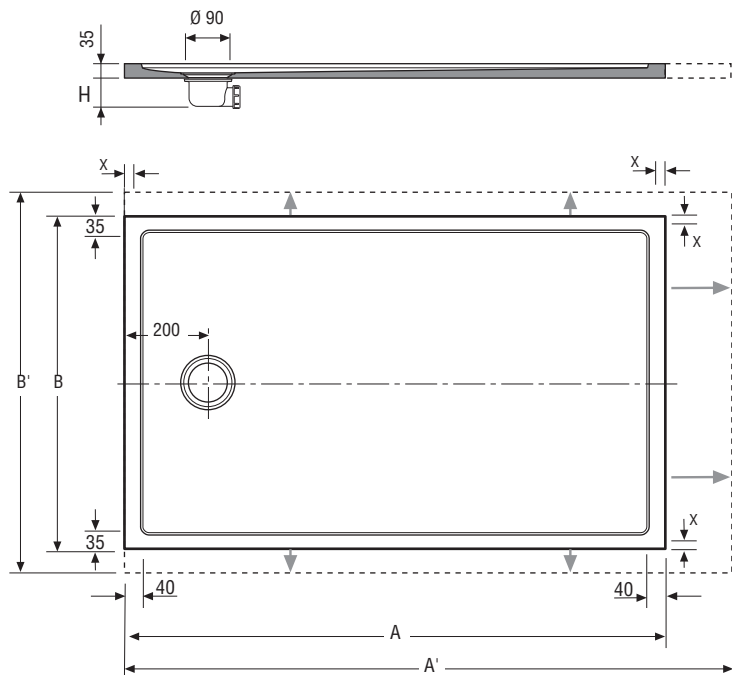


Scheda Tecnica

Piatto doccia QUADRO



Quadro standard nei formati:

700 x 1000	800 x 1000	900 x 1000
x 1100	x 1100	x 1100
x 1200	x 1200	x 1200
x 1300	x 1300	x 1300
x 1400	x 1400	x 1400
x 1500	x 1500	x 1500
x 1600	x 1600	x 1600
x 1700	x 1700	x 1700
x 1800	x 1800	x 1800
x 1900	x 1900	x 1900

(H) Misura in funzione dello scarico somministrato.

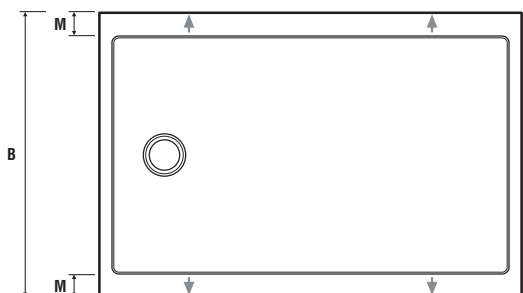
X Zona posizionamento vetro. Lo spazio minimo riservato è di 30 mm.

A	A'	B	B'	V	P	V'	P'
1000	1090	700	750	0'063	35	0'069	44
1100	1190	700	750	0'069	39	0'075	48
1200	1290	700	750	0'075	42	0'081	52
1300	1390	700	750	0'081	45	0'087	55
1400	1490	700	750	0'087	49	0'093	59
1500	1590	700	750	0'093	52	0'100	63
1600	1690	700	750	0'100	56	0'106	67
1700	1790	700	750	0'106	63	0'088	78
1800	1890	700	750	0'088	70	0'088	81
1900	2000	700	750	0'088	73	0'098	86

A	A'	B	B'	V	P	V'	P'
1000	1090	800	890	0,063	40	0,077	53
1100	1190	800	890	0,069	44	0,084	57
1200	1290	800	890	0,075	47	0,091	62
1300	1390	800	890	0,081	51	0,098	66
1400	1490	800	890	0,087	55	0,105	71
1500	1590	800	890	0,093	59	0,112	75
1600	1690	800	890	0,100	63	0,119	80
1700	1790	800	890	0,106	72	0,088	92
1800	1890	800	890	0,088	79	0,088	96
1900	2000	800	890	0,088	83	0,098	102

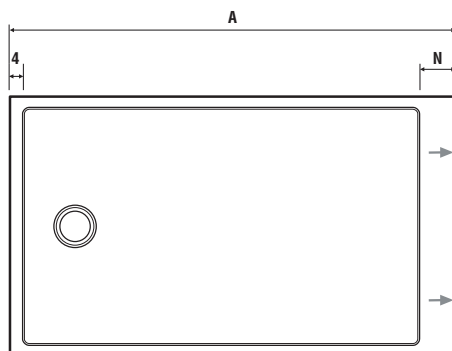
A	A'	B	B'	V	P	V'	P'
1000	1090	900	1000	0'070	45	0'086	59
1100	1190	900	1000	0'077	49	0'093	64
1200	1290	900	1000	0'084	53	0'101	69
1300	1390	900	1000	0'091	58	0'109	74
1400	1490	900	1000	0'098	62	0'116	79
1500	1590	90	1000	0'105	66	0'124	84
1600	1690	900	1000	0'112	70	0'132	90
1700	1790	900	1000	0'119	80	0'163	107
1800	1890	900	1000	0'088	87	0'172	112
1900	2000	900	1000	0'088	92	0'181	119

Units: mm / V: m³ / P: Kg



Misura della cornice in base alla larghezza del piatto

B	M	B	M	B	M	B	M
700	35	800	35	900	35	1000	85
710	40	810	40	910	40		
720	45	820	45	920	45		
730	50	830	50	930	50		
740	55	840	55	940	55		
750	60	850	60	950	60		
		860	65	960	65		
		870	70	970	70		
		880	75	980	75		
		890	80	990	80		



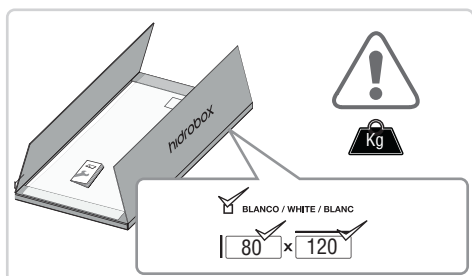
Misura della cornice in base alla lunghezza del piatto

A										N
1000	1100	1200	1300	1400	1500	1600	1700	1800	1900	40
1010	1110	1210	1310	1410	1510	1610	1710	1810	1910	50
1020	1120	1220	1320	1420	1520	1620	1720	1820	1920	60
1030	1130	1230	1330	1430	1530	1630	1730	1830	1930	70
1040	1140	1240	1340	1440	1540	1640	1740	1840	1940	80
1050	1150	1250	1350	1450	1550	1650	1750	1850	1950	90
1060	1160	1260	1360	1460	1560	1660	1760	1860	1960	100
1070	1170	1270	1370	1470	1570	1670	1770	1870	1970	110
1080	1180	1280	1380	1480	1580	1680	1780	1880	1980	120
1090	1190	1290	1390	1490	1590	1690	1790	1890	1990	130
									2000	140

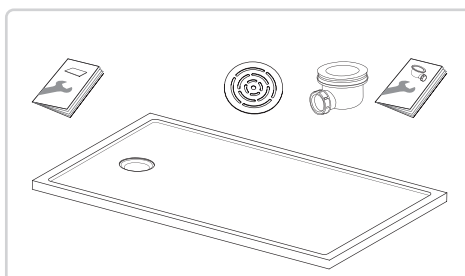
Istruzioni per la posa

Piatto doccia QUADRO

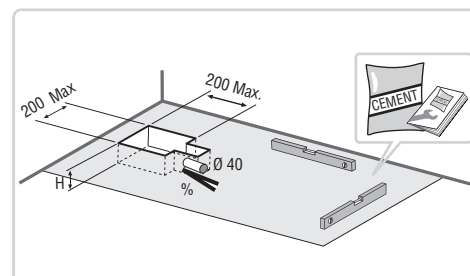
1



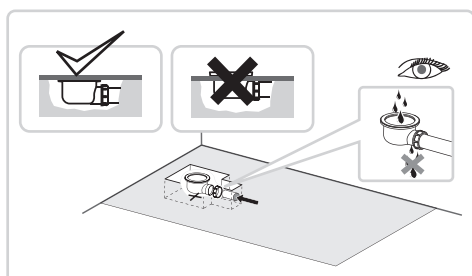
2



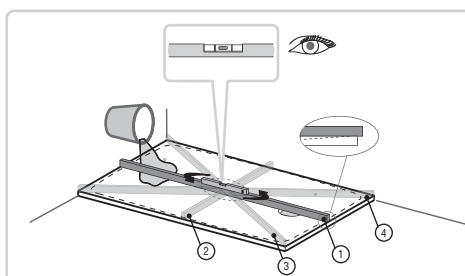
3



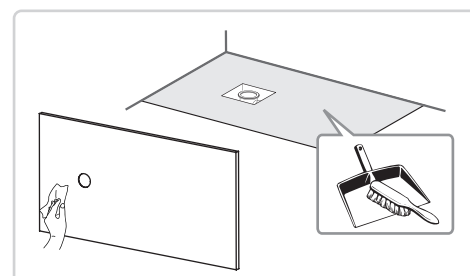
4



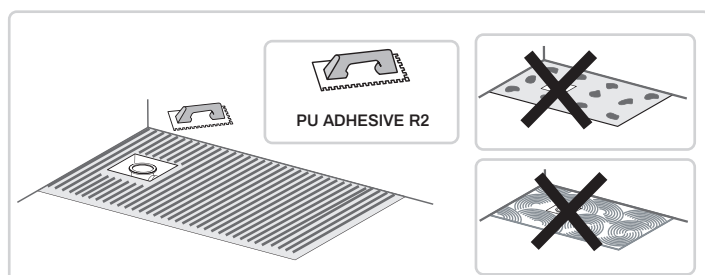
5



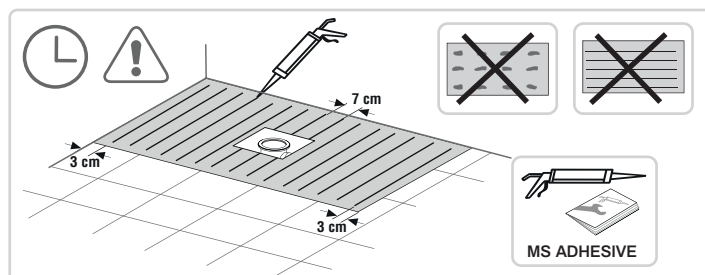
6



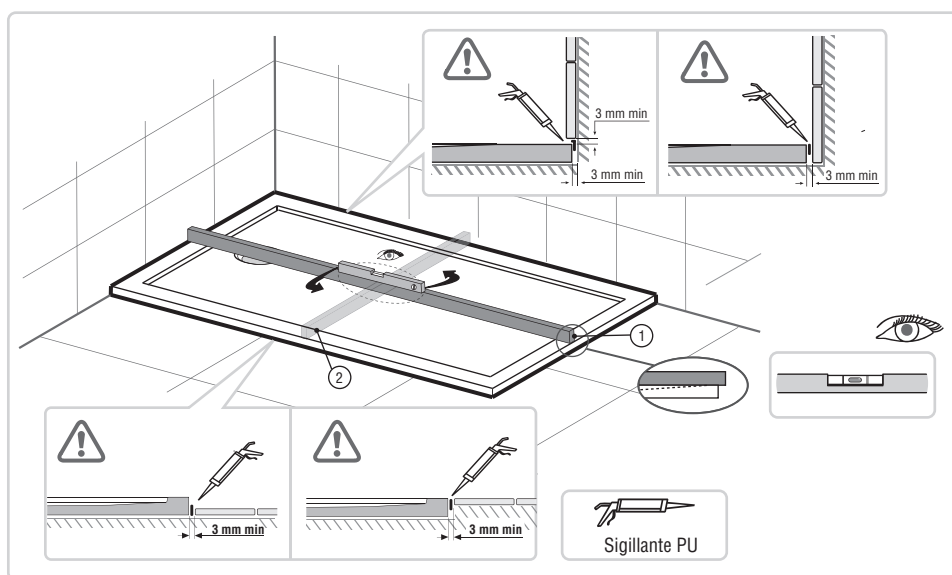
7.1 OPZIONE (A)



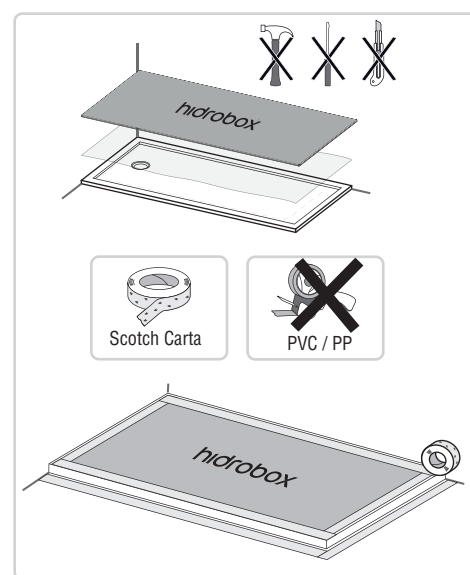
7.2 OPZIONE (B)



8



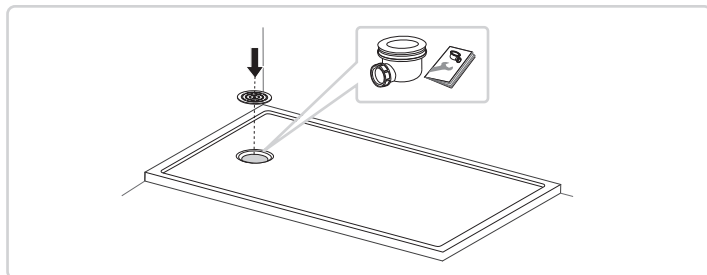
9



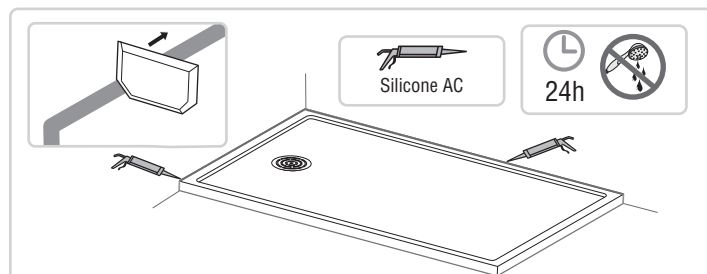
Istruzioni per la posa

Piatto doccia QUADRO

10



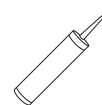
11



Adesivi (forniti su richiesta)



**Adesivo bicomponente
Poliuretano R2 (Spatola dentata)**
Barattolo da 5KG



Adesivo Poliuretano (Cordoncini)
Cartuccia da 300 ml